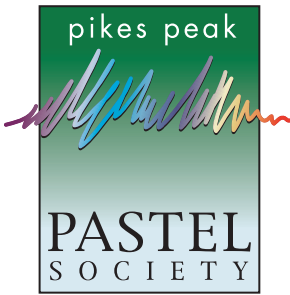


The Paper

News of the Pikes Peak Pastel Society

May, 2008



www.pikespeakpastel.org

Reminder for the Warehouse Restaurant and Gallery Exhibit

(Please check your prospectus for details)

Intake

Monday, June 2,
10:00 – 11:00 AM,
The Warehouse
Restaurant and
Gallery,
25 W. Cimarron St.

Unaccepted paintings pick-up

Same day,
1:00 – 3:00 PM

Reception

Thursday, June 12,
5:30 – 8:00 PM

Pick-up

Monday, June 30,
10:00 AM – 1:00 PM

Letter from the President/Editor:

Dear Pastel Friends:

This newsletter is a little bit late; normally it would've gone out before our April meeting, which actually was a little bit early! A trip to Sicily with my sister was to blame, but I don't feel guilty; we had such a great time! I didn't paint, but with 229 photographs, I have some wonderful material for future paintings.

Allan's and my Spring Studio Exhibit of 4/25, 26 and 27 is now behind us and I can relax a little – but not for long. This was my first experience with choosing a charity or organization to donate a percentage of profits to and thankfully, we were able to send a sizable check to the Nature Center. The Pueblo Nature Center has been a very special place for me ever since moving to Pueblo. I have done countless paintings in the area, both en plein air and from photos. It has always given me great joy to interpret the many nuances of the river and surrounding landscape in different seasons, morning, late day and evening. It was an easy decision to give back a little of what it has given me.

I'm very excited by our two excellent exhibits scheduled for this year. The Warehouse show in June was the result of efforts by our Exhibit Chair, Trish Moores. This show will not be juried and you can submit pieces from the Sangre de Cristo exhibit, **if they have not been in another PPPS show in Colorado Springs**. You should have already received the prospectus for this exhibit.

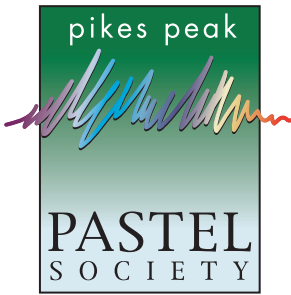
Most recently, we have been approved for an exhibit at CSU-Pueblo for the month of October. This is in a large attractive gallery space on campus. Thanks go to Starr Miller who made the initial contact. Merlyn Jones and George Hart have done a great job on follow-up for this show. This will be juried and all new work will be required for it. You will receive more details later and I hope everyone will submit paintings to it!

Due to my studio exhibit, I was not able to attend the Ramon Kelley workshop. By all accounts it was very enjoyable and I was really sorry to have missed it. Many thanks to Pam, Judy S., Mariya and Marlene for their work providing and arranging the still life set-ups and taking care of Ramon and his wife. If I omitted anyone, I apologize. When I told Ramon I wouldn't be able to attend, he offered me a day at his studio to work with him. I may take him up on it! See Pegi Ballenger's article on page 2.

I'd like to welcome George Hart as our new Vice President. I'm delighted to have him on board. George is also Chair of our newly formed and very pro-active Public Relations/Marketing Committee comprised of members, Kris Olson, Sharon Cartwright, Merlyn Jones, Starr Miller and Gary Sillasen. Great ideas are coming out of this group!

Our first plein air get-together of the season is scheduled for Thursday, May 22nd at Fountain Creek Regional Park. Details and directions are on page 4. I hope to see many of you there!

Fran



www.pikespeakpastel.org

The Paper

News of the Pikes Peak Pastel Society

Ramon Kelley Workshop April 26, 2008

By Pegi Ballenger

With two demonstrations, Ramon Kelly gave an inspiring workshop at Cottonwood. One still life and one portrait took him about three quarters of the day. He began by giving us a little information on his background. He is a self taught painter, although he did go to school for commercial art. He likes to quote the painters he admires, Sargent, Whistler, Valentine Serov to name a few. Here are some of the comments he made while he was painting:



Photos courtesy of Sharon Cartwright

- Quoting Charles Hawthorne, Ramon said "Make lots of starts, and paint with chunks of color."
- From Whistler "Try to make the painting look like it was blown onto the canvas."
- Have fun.
- Don't paint a painting, make a painting.
- Paint like you talk.
- Work lean to fat and stay lean for as long as you can in the painting.
- Show different directions in your strokes.
- Paint for yourself. If you satisfy yourself, it will be a good painting.
- "There are three steps to painting – dark, medium and light." -Sargent
- Don't start a painting with a negative attitude. It won't be successful.

Ramon paints with a fairly limited range of color, uses Unison, Grumbacher or Rembrandts, and NuPastels. He paints on Canson paper (the smooth side) and rubs a lot of the early layers into the paper. Everyone was fascinated by the amount of contact he had with the paper. He places his paper on a wooden board so that he can really rub into it. If he can't move pigment with his fingers, he uses a rag to rub it around. Sometimes he moves color with a kneaded eraser. By pressing the eraser into the color, he lifts it off then places it in another area of the painting. If something is really stubborn and can't be covered with another layer, he uses a piece of fine sand paper to rub it off the surface.

Grays are very important. Ramon talked about non-colors meaning that they are grayed down colors. He said to fight for your cool colors and to think about edges; lost, found, hard and soft. Drawing is of course very important. He didn't start with

Board of Directors

Fran Dodd, President,
719-547-0165 (Pueblo)

George Hart, Vice President,
719-565-0275 (Pueblo)

Jill Tristram, Secretary,
719-963-8489 (Woodland Park)

Marlene Kort, Treasurer,
719-573-1221 (Colo. Spgs.)

Kang Lee Sheppard, Officer,
719-282-2706 (Colo. Spgs.)

Trish Moores, Officer,
719-531-6405 (Colo. Spgs.)

Susan Tormoen, Officer,
719-520-3331 (Colo. Spgs.)

Pikes Peak Pastel Society
P.O. Box 2443
Colorado Springs, CO
80901-2443

The Paper

News of the Pikes Peak Pastel Society

a thumbnail or any preliminary sketch on his paper. He has painted for so long that he knows where he is going and doesn't need those steps. He stressed that painting, just like playing an instrument or a sport is something we have to practice all the time in order to be accomplished at it.

In his portrait demo, Ramon said to exaggerate the pose. Paint more of what you see. He likes faces with character and painted an elderly man with plenty of lines in his face. He started with a skull shape and smudges for the eye sockets, then explained the structure of the face as he painted. Ramon keeps a skull in his studio so that he can move it to the position he wants. He also uses a mirror to check his work. When he is painting features he uses dark under a fold, a warm color on the ridge of the fold and a cool highlight.

Finally Ramon said that the face he was painting was already in the paper. Several of us want to know where he buys that paper!



Photo courtesy of Jill Tristram

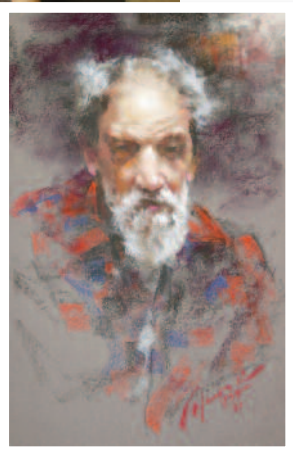


Photo courtesy of Sharon Cartwright

Members' News

"A Mouse in the Rabbi's Study", the second book that **Pegi Ballenger** has illustrated is now available. Anyone interested in a copy of it can call or email her.

Jill Tristram had three paintings in the Salute to Southern Colorado Artists show and won 1st and 3rd in the Drawing category. In addition, she has three pieces in the Blossom Festival Show in Canyon City. Her painting "Beckwith Ranch" took 2nd Place.

Jeannie Schlump has a painting in the Wyoming Watercolor Society show at Gallery West in Laramie and will have a solo exhibit from mid June to mid July at the ASUW Gallery. She coordinated her students' exhibit for LCCC's First Annual Art Show and Sale. From 95 entries, 15 sales were made. She wrote that one local gallery has three theme shows scheduled and the owner finds that the public enjoys them. Jeannie reminds us of a show we did from black and white photos. We exhibited the photos along with our creative interpretations of them. Might be fun to do it again!

On a personal note, Jeannie's husband, Roger's, blood work is improving and his cancer is being held in check with an extremely potent experimental drug in addition to chemo therapy. We're certainly all pulling for his recovery.

Fran Dodd's work is represented in a new contemporary gallery in Colorado Springs, Gallery Two-Ten. She juried the Annual Blossom Festival Art Exhibit in Canon City, now on exhibit. Sheppard Art Institute will be sponsoring a three-day workshop in oil for her on Wednesday, Thursday and Friday, 5/14, 15, 16 and a three-day workshop in pastel on Monday, Tuesday and Wednesday, 5/19, 20 and 21. Dodd did a demonstration in pastel for the Colorado Springs Art Guild on Thursday, April 24th.

continued on next page

Committees

Exhibit

Trish Moores, Chair
Judy Michael Myers
Jean Houghton
Pat Geonetta
Diane Brewner
Sue Tormoen

Public Relations/Marketing

George Hart
Kris Olson
Sharon Cartwright
Starr Miller
Merlyn Jones
Gary Sillansen

Membership

Lynn Chapman

Graphic Design

Judy Steinger

Communications

Jill Tristram

Newsletter

Fran Dodd (editor)
Judy Steinger (publisher)
Jill Tristram (distribution)

Jury Panel

Fran Dodd
Mariya Zvonkovich

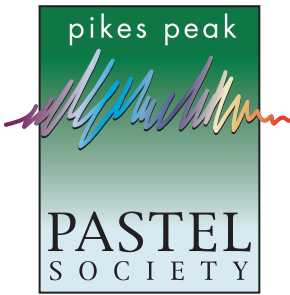
Historian

Pegi Ballenger

The Paper

News of the Pikes Peak Pastel Society

May, 2008



www.pikespeakpastel.org

Quotable Quotes

"A man who works with his hands is a laborer; a man who works with his hands and his brain is a craftsman; but a man who works with his hands and his brain and his heart is an artist."

– Louis Nizer,
American lawyer
(1902-1994)

More Members' News

Lynn Chapman received 1st and 3rd in Pastels and 1st in mixed media in Pueblo Art Guild's Spring Exhibit. She participated in two Invitational Shows: "Espiritu" and a Pueblo bank's Christmas Show. One of her paintings was the cover piece for the Pueblo Choral Society. Four paintings were juried into the Canon City Blossoms Exhibit. She has had two solo exhibits in Pueblo:

Creative Expressions art store and Sanctuary II Gallery. A third one and her second at this facility will be at Solar Roast in June. Currently she is involved in an artists' co-op, Art on South Main, in Pueblo and will be demonstrating there this month. "Follow your passion and keep on painting!"

PPPS Plein Air Paintout

Thursday, May 22, 8:00 AM
Fountain Creek Regional Park

Directions:

From downtown Colorado Springs:

- South on I-25 8.5 miles to exit #132, Mesa Ridge Parkway/County Rd. 16.
- Turn left (east) at the light at the end of the ramp and cross over I-25.
- Turn right at the stoplight onto Hwy 85 and go south for about 0.6 miles.

The park entrance is a dirt road on your right and is easy to miss since the parking and Nature Center are set back from the road. There are ponds, trees, trails, lots of grasses, reeds and plenty of wildlife. Nice bathrooms and deck at the nature center.

There will be a couple of groups of students there at that time, probably meeting in the building before they set out on the trails with guides, but the park is large enough for you to set up farther out, if you don't want to encounter them!

MARIYA ZVONKOVICH PASTEL WORKSHOP

LA ROMITA, Terni, Umbria, Italy
June 27 - July 11, 2009
(Other media welcome)

Includes in-country transportation, housing, and most meals. 2009 prices are not set yet, but 2008 cost is \$2790 for two weeks.

La Romita, a former monastery in the foothills of the Appennine mountains, is in its fourth decade as an art school.

Day trips include Assisi and Perugia. Morning tours include hilltowns "off the beaten path...practically off the map...jewels of architecture and history spilling from the hilltops into the surrounding vineyards and olive groves."

After lunch, students will meet for class in La Romita's frescoed chapel, now studio. Day ends with exquisite Umbrian food and regional wine.

PASTELS IN THE PARK

July 14 – 18
9:00 AM – noon
BEMIS SCHOOL OF ART (CSFAC)
475-2444; 477-4348